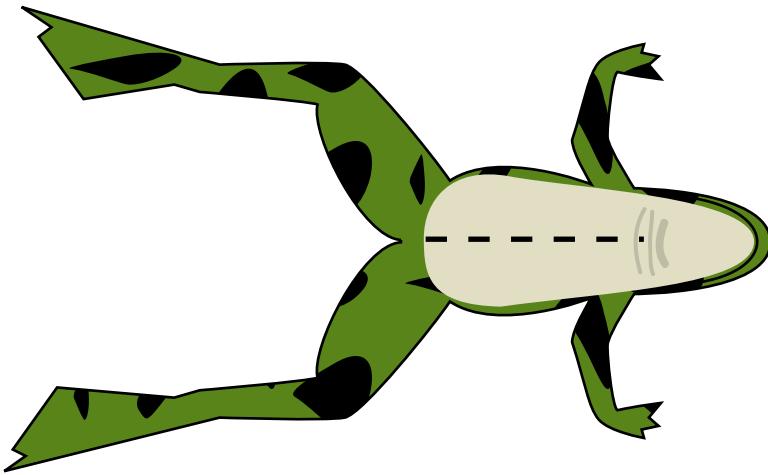
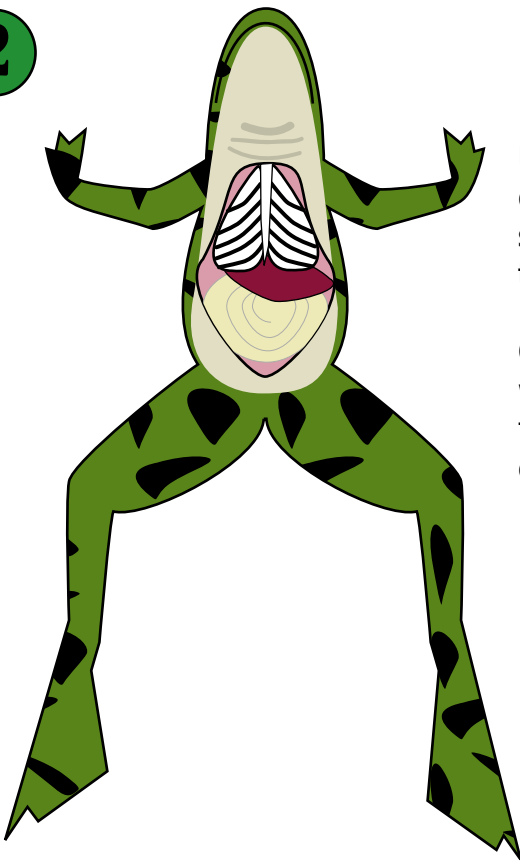


1



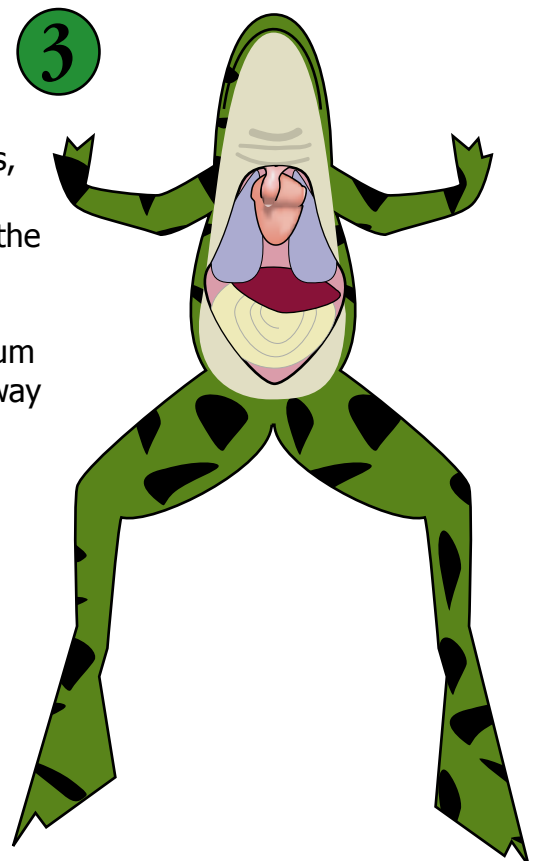
Make a longitudinal incision along the ventral surface of the frog with a scalpel.

2



Using sharp scissors, cut through the sternum to expose the thoracic cavity.

3



Grasp the pericardium with forceps; cut away the pericardium to expose the heart.

4

Gently lift up the apex of the heart and pierce it with your hook. Then tie the attached thread to the force transducer.

To MLT500 Force Transducer

